

Harvest the Sunshine

JA SOLAR

605W



JAM72D40 LB n-type Double Glass Bifacial Modules

Premium Cells

n-
Bycium+
16BB

MBB Half-Cell
Technology

26%



Cell Conversion
Efficiency

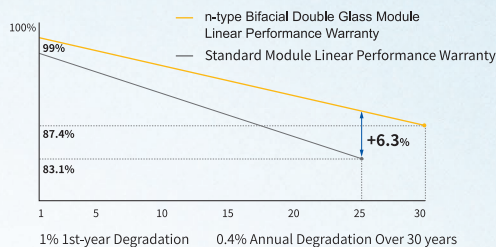
Premium Modules

Higher power
generation better LCOE

LID n-type with very
Lower LID

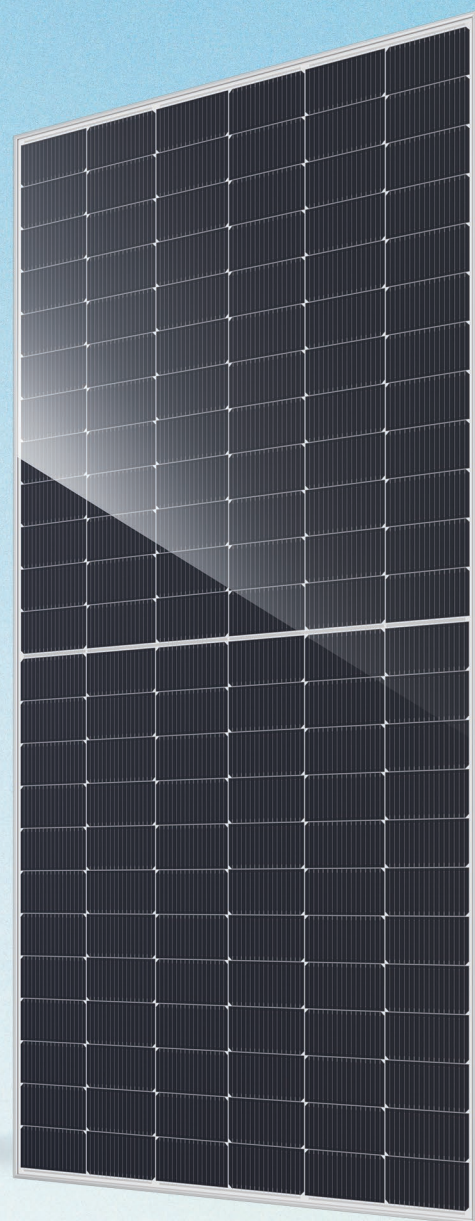
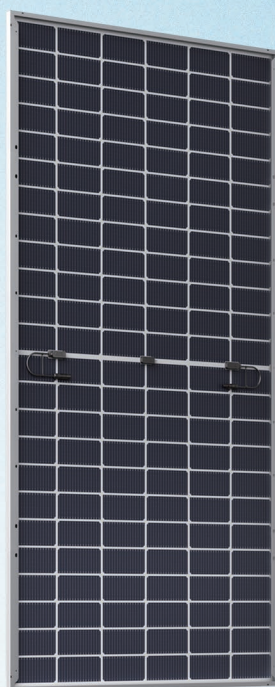
Better Temperature
Coefficient

Better low irradiance
response



12-year product warranty

30-year linear power output warranty

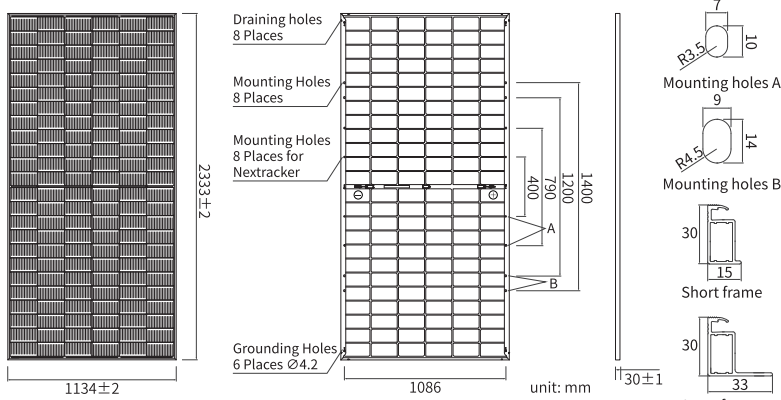


Comprehensive Certificates

- IEC 61215, IEC 61730, UL 61215, UL 61730
- ISO 9001: 2015 Quality management systems
- ISO 14001: 2015 Environmental management systems
- ISO 45001: 2018 Occupational health and safety management systems
- IEC 62941: 2019 Terrestrial photovoltaic (PV) modules - Quality system for PV module manufacturing



DEEP BLUE 4.0 Pro



MECHANICAL PARAMETERS

Cell	Mono
Weight	32.5kg
Dimensions	2333±2mm×1134±2mm×30±1mm
Cable Cross Section Size	4mm ² (IEC), 12 AWG(UL)
No. of cells	144(6×24)
Junction Box	IP68, 3diodes
Connector	QC 4.10-351/ MC4-EVO2A
Cable Length (Including Connector)	Portrait: 300mm(+)/400mm(-) Landscape: 1400mm(+)/1400mm(-)
Front Glass/Back Glass	2.0mm/2.0mm
Packaging Configuration	36pcs/Pallet, 720pcs/40HQ Container

Remark: customized frame color and cable length available upon request

ELECTRICAL PARAMETERS AT STC

TYPE	JAM72D40 580/LB	JAM72D40 585/LB	JAM72D40 590/LB	JAM72D40 595/LB	JAM72D40 600/LB	JAM72D40 605/LB
Rated Maximum Power(Pmax) [W]	580	585	590	595	600	605
Open Circuit Voltage (Voc) [V]	51.60	51.80	52.00	52.20	52.40	52.60
Maximum Power Voltage(Vmp) [V]	43.06	43.24	43.41	43.59	43.76	43.94
Short Circuit Current(Isc) [A]	14.23	14.29	14.35	14.42	14.48	14.53
Maximum Power Current(Imp) [A]	13.47	13.53	13.59	13.65	13.71	13.77
Module Efficiency [%]	21.9	22.1	22.3	22.5	22.7	22.9
Power Tolerance	0~+3%					
Temperature Coefficient of Isc(α_Isc)	+0.045%/°C					
Temperature Coefficient of Voc (β_Voc)	-0.250%/°C					
Temperature Coefficient of Pmax(γ_Pmp)	-0.290%/°C					
STC	Irradiance 1000W/m ² , cell temperature 25°C, AM1.5G					

Remark: Electrical data in this catalog do not refer to a single module and they are not part of the offer. They only serve for comparison among different module types.

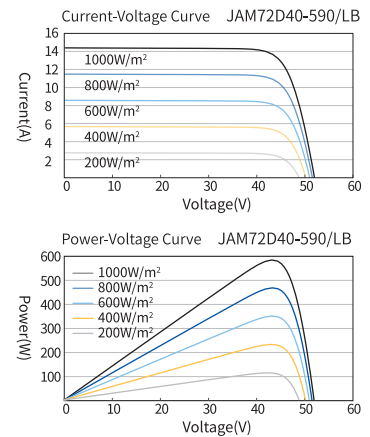
ELECTRICAL CHARACTERISTICS WITH 10% SOLAR IRRADIATION RATIO

TYPE	JAM72D40 580/LB	JAM72D40 585/LB	JAM72D40 590/LB	JAM72D40 595/LB	JAM72D40 600/LB	JAM72D40 605/LB
Rated Max Power(Pmax) [W]	626	632	637	643	648	653
Open Circuit Voltage(Voc) [V]	51.60	51.80	52.00	52.20	52.40	52.60
Max Power Voltage(Vmp) [V]	43.06	43.24	43.41	43.59	43.76	43.94
Short Circuit Current(Isc) [A]	15.36	15.43	15.50	15.57	15.64	15.69
Max Power Current(Imp) [A]	14.55	14.61	14.68	14.74	14.81	14.87
Irradiation Ratio (rear/front)	10%					

* For Nexttracker installations, maximum static load please take compatibility approve letter between JA Solar and Nexttracker for reference.

** Bifaciality=Pmax, rear/Rated Pmax, front

CHARACTERISTICS



OPERATING CONDITIONS

Maximum System Voltage	1500V DC
Operating Temperature	-40°C~+85°C
Maximum Series Fuse Rating	30A
Maximum Static Load, Front*	5400Pa(112 lb/ft ²)
Maximum Static Load, Back*	2400Pa(50 lb/ft ²)
NOCT	45±2°C
Bifaciality**	80%±10%
Safety Class	Class II
Fire Performance	UL Type 29/Class C